

Test Report

Applicant: GuangZhou STS Lighting Equipment Co.,Ltd.
No.251 Tingshi North Road Chaoyang Shijing Town Baiyun District Guangzhou
China

Report on the submitted sample(s) said to be:

Sample Name: Lighting Equipment

Model: MSPOT300BSW, MSPOT500BSW, MSPOT400BSW, MSPOT200, M SPOT200II,
MSPOT200III/HYBRID, MSPOT120, MSPOT90/II, MSPOT75, MSPOT60,
MWASH1920Z, MWASH1960Z, MWASH400, MWASH500
(The materials and key components are the same for all models.)

Trade Mark: N/A

Date of Test: Oct. 28, 2024 - Nov. 11, 2024

Date of Report: Nov. 11, 2024

Test Requested: 1. As specified by client ,to screen Lead(Pb),Cadmium(Cd),Mercury(Hg),
Chromium(Cr)and Bromine(Br)in the submitted sample(s)by XRF.
2. As specified by client ,when screening results exceed the XRF screening limit in
IEC62321-3-1:2013, further use of wet chemical methods are required to test
Lead(Pb), Cadmium(Cd), Mercury(Hg), Hexavalent Chromium (Cr(VI)),
Polybrominated Biphenyls(PBBs), Polybrominated Diphenyl Ethers(PBDEs),
Bis(2-ethylhexyl) phthalate (DEHP), Butyl benzyl phthalate (BBP),
Dibutylphthalate (DBP), and Diisobutyl phthalate (DIBP) in the submitted sample(s).

Test Method: Please refer to the following page(s).

Test Result(s): Please refer to the following page(s).

Conclusion: The test results comply with the limits of RoHS 2.0 Directive (EU) 2015/863 and
(EU) 2017/2102 amending Annex II to Directive 2011/65/EU.

Checked By:

Nana Lin

(Nana Lin)

Approved By:

Coco Tang

(Coco Tang)



Test Method:

(1) With reference to IEC 62321

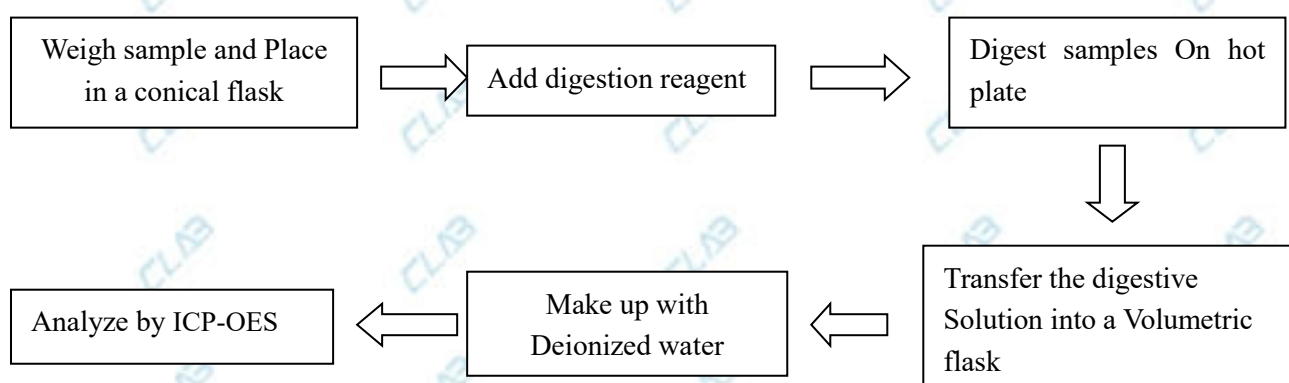
Testing item	Pretreatment method	Measuring instrument	MDL
Lead(Pb)	IEC 62321-5:2013	ICP-OES	2 mg/kg
Cadmium(Cd)	IEC 62321-5:2013	ICP-OES	2 mg/kg
Mercury(Hg)	IEC 62321-4:2013+AMD1:2017	ICP-OES	2 mg/kg
Cr(VI) (Metal)	IEC62321-7-1:2015	UV-VIS	0.1µg/cm ²
Cr(VI) Nonmetal)	IEC62321-7-2:2017	UV-VIS	8mg/kg
PBBs/ PBDEs	IEC 62321-6:2015	GC-MS	5 mg/kg

(2) With reference to EN 62321-8:2017

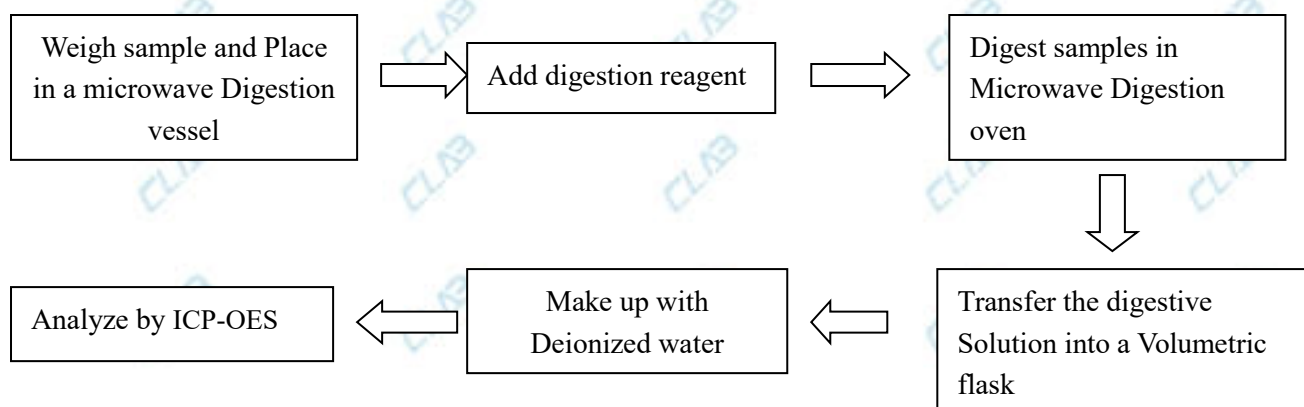
Testing item	Pretreatment method	Measuring instrument	MDL
DEHP、DBP、BBP、DIBP	EN 62321-8:2017	GC-MS	30 mg/kg

Test Process:

1. Test for Cd/Pb Content

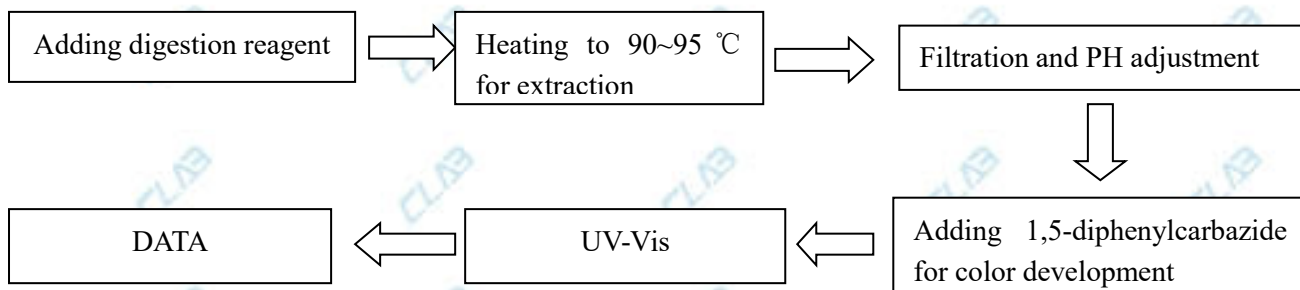


2. Test for Hg Content

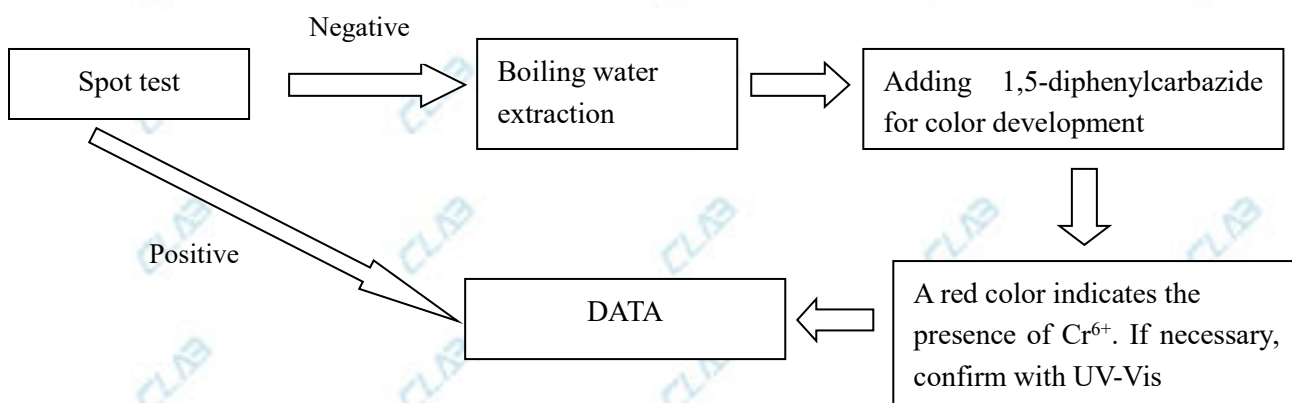


3. Test for Chromium(VI) Content

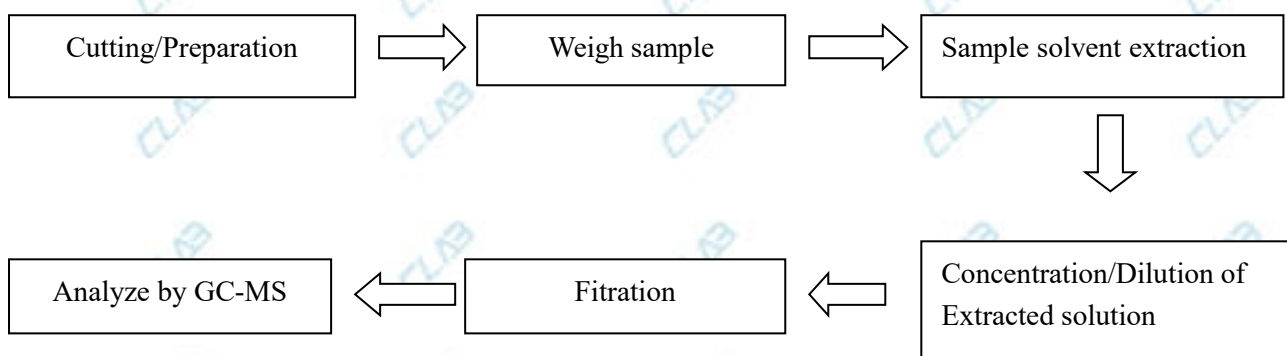
Nonmetallic material



Metallic material



4. Test for DBP, BBP, DEHP, DIHP, DIBP, PBB, PBDE Content



Test Results:

Testing Item	Unit	ROHS Limit	Result					
			1	2	3	4	5	6
Lead(Pb)	mg/kg	1000	N.D.	N.D.	N.D.	N.D.	N.D.	N.D.
Cadmium(Cd)	mg/kg	100	N.D.	N.D.	N.D.	N.D.	N.D.	N.D.
Mercury(Hg)	mg/kg	1000	N.D.	N.D.	N.D.	N.D.	N.D.	N.D.
Chromium Cr(VI) (Metal)	µg/cm ²	0.13	/	/	N.D.	/	N.D.	N.D.
Chromium Cr(VI) Nonmetal)	mg/kg	1000	N.D.	N.D.	/	N.D.	/	N.D.
Sum of PBBs	mg/kg	1000	N.D.	N.D.	/	N.D.	/	N.D.
Monobromobiphenyl	mg/kg	-	N.D.	N.D.	/	N.D.	/	N.D.
Dibromobiphenyl	mg/kg	-	N.D.	N.D.	/	N.D.	/	N.D.
Tribromobiphenyl	mg/kg	-	N.D.	N.D.	/	N.D.	/	N.D.
Tetrabromobiphenyl	mg/kg	-	N.D.	N.D.	/	N.D.	/	N.D.
Pentabromobiphenyl	mg/kg	-	N.D.	N.D.	/	N.D.	/	N.D.
Hexabromobiphenyl	mg/kg	-	N.D.	N.D.	/	N.D.	/	N.D.
Heptabromobiphenyl	mg/kg	-	N.D.	N.D.	/	N.D.	/	N.D.
Octabromobiphenyl	mg/kg	-	N.D.	N.D.	/	N.D.	/	N.D.
Nonabromobiphenyl	mg/kg	-	N.D.	N.D.	/	N.D.	/	N.D.
Decabromobiphenyl	mg/kg	-	N.D.	N.D.	/	N.D.	/	N.D.
Sum of PBDEs	mg/kg	1000	N.D.	N.D.	/	N.D.	/	N.D.
Monobromodiphenyl ether	mg/kg	-	N.D.	N.D.	/	N.D.	/	N.D.
Dibromodiphenyl ether	mg/kg	-	N.D.	N.D.	/	N.D.	/	N.D.
Tribromodiphenyl ether	mg/kg	-	N.D.	N.D.	/	N.D.	/	N.D.
Tetrabromodiphenyl ether	mg/kg	-	N.D.	N.D.	/	N.D.	/	N.D.
Pentabromodiphenyl ether	mg/kg	-	N.D.	N.D.	/	N.D.	/	N.D.
Hexabromodiphenyl ether	mg/kg	-	N.D.	N.D.	/	N.D.	/	N.D.
Heptabromodiphenyl ether	mg/kg	-	N.D.	N.D.	/	N.D.	/	N.D.
Octabromodiphenyl ether	mg/kg	-	N.D.	N.D.	/	N.D.	/	N.D.
Nonabromodiphenyl ether	mg/kg	-	N.D.	N.D.	/	N.D.	/	N.D.
Decabromodiphenyl ether	mg/kg	-	N.D.	N.D.	/	N.D.	/	N.D.
Diisobutyl phthalate (DIBP)	mg/kg	1000	N.D.	N.D.	/	N.D.	/	N.D.
Bis-(2-ethylhexyl) Phthalate (DEHP)	mg/kg	1000	N.D.	N.D.	/	N.D.	/	N.D.
Benzylbutyl Phthalate (BBP)	mg/kg	1000	N.D.	N.D.	/	N.D.	/	N.D.
Dibutyl Phthalate (DBP)	mg/kg	1000	N.D.	N.D.	/	N.D.	/	N.D.

Sample Description:

- 1: Black plastic
- 2: Black metal
- 3: Screw
- 4: Blue plastic
- 5: Silvery metal
- 6: White plastic

Testing Item	Unit	ROHS Limit	Result					
			7	8	9	10	11	12
Lead(Pb)	mg/kg	1000	N.D.	N.D.	N.D.	N.D.	N.D.	N.D.
Cadmium(Cd)	mg/kg	100	N.D.	N.D.	N.D.	N.D.	N.D.	N.D.
Mercury(Hg)	mg/kg	1000	N.D.	N.D.	N.D.	N.D.	N.D.	N.D.
Chromium Cr(VI) (Metal)	µg/cm ²	0.13	/	/	/	/	/	/
Chromium Cr(VI) Nonmetal)	mg/kg	1000	N.D.	N.D.	N.D.	N.D.	N.D.	N.D.
Sum of PBBs	mg/kg	1000	N.D.	N.D.	N.D.	N.D.	N.D.	N.D.
Monobromobiphenyl	mg/kg	-	N.D.	N.D.	N.D.	N.D.	N.D.	N.D.
Dibromobiphenyl	mg/kg	-	N.D.	N.D.	N.D.	N.D.	N.D.	N.D.
Tribromobiphenyl	mg/kg	-	N.D.	N.D.	N.D.	N.D.	N.D.	N.D.
Tetrabromobiphenyl	mg/kg	-	N.D.	N.D.	N.D.	N.D.	N.D.	N.D.
Pentabromobiphenyl	mg/kg	-	N.D.	N.D.	N.D.	N.D.	N.D.	N.D.
Hexabromobiphenyl	mg/kg	-	N.D.	N.D.	N.D.	N.D.	N.D.	N.D.
Heptabromobiphenyl	mg/kg	-	N.D.	N.D.	N.D.	N.D.	N.D.	N.D.
Octabromobiphenyl	mg/kg	-	N.D.	N.D.	N.D.	N.D.	N.D.	N.D.
Nonabromobiphenyl	mg/kg	-	N.D.	N.D.	N.D.	N.D.	N.D.	N.D.
Decabromobiphenyl	mg/kg	-	N.D.	N.D.	N.D.	N.D.	N.D.	N.D.
Sum of PBDEs	mg/kg	1000	N.D.	N.D.	N.D.	N.D.	N.D.	N.D.
Monobromodiphenyl ether	mg/kg	-	N.D.	N.D.	N.D.	N.D.	N.D.	N.D.
Dibromodiphenyl ether	mg/kg	-	N.D.	N.D.	N.D.	N.D.	N.D.	N.D.
Tribromodiphenyl ether	mg/kg	-	N.D.	N.D.	N.D.	N.D.	N.D.	N.D.
Tetrabromodiphenyl ether	mg/kg	-	N.D.	N.D.	N.D.	N.D.	N.D.	N.D.
Pentabromodiphenyl ether	mg/kg	-	N.D.	N.D.	N.D.	N.D.	N.D.	N.D.
Hexabromodiphenyl ether	mg/kg	-	N.D.	N.D.	N.D.	N.D.	N.D.	N.D.
Heptabromodiphenyl ether	mg/kg	-	N.D.	N.D.	N.D.	N.D.	N.D.	N.D.
Octabromodiphenyl ether	mg/kg	-	N.D.	N.D.	N.D.	N.D.	N.D.	N.D.
Nonabromodiphenyl ether	mg/kg	-	N.D.	N.D.	N.D.	N.D.	N.D.	N.D.
Decabromodiphenyl ether	mg/kg	-	N.D.	N.D.	N.D.	N.D.	N.D.	N.D.
Diisobutyl phthalate (DIBP)	mg/kg	1000	N.D.	N.D.	N.D.	N.D.	N.D.	N.D.
Bis-(2-ethylhexyl) Phthalate (DEHP)	mg/kg	1000	N.D.	N.D.	N.D.	N.D.	N.D.	N.D.
Benzylbutyl Phthalate (BBP)	mg/kg	1000	N.D.	N.D.	N.D.	N.D.	N.D.	N.D.
Dibutyl Phthalate (DBP)	mg/kg	1000	N.D.	N.D.	N.D.	N.D.	N.D.	N.D.

Sample Description:

7: The black wire

8: The Red wire

9: The yellow-green wire

10: The blue wire

11: PCB

12: Switch

Testing Item	Unit	ROHS Limit	Result					
			13	14	15	16	17	18
Lead(Pb)	mg/kg	1000	N.D.	N.D.	N.D.	N.D.	N.D.	N.D.
Cadmium(Cd)	mg/kg	100	N.D.	N.D.	N.D.	N.D.	N.D.	N.D.
Mercury(Hg)	mg/kg	1000	N.D.	N.D.	N.D.	N.D.	N.D.	N.D.
Chromium Cr(VI) (Metal)	µg/cm ²	0.13	/	/	N.D.	N.D.	/	/
Chromium Cr(VI) Nonmetal)	mg/kg	1000	N.D.	N.D.	/	/	N.D.	N.D.
Sum of PBBs	mg/kg	1000	N.D.	N.D.	/	/	N.D.	N.D.
Monobromobiphenyl	mg/kg	-	N.D.	N.D.	/	/	N.D.	N.D.
Dibromobiphenyl	mg/kg	-	N.D.	N.D.	/	/	N.D.	N.D.
Tribromobiphenyl	mg/kg	-	N.D.	N.D.	/	/	N.D.	N.D.
Tetrabromobiphenyl	mg/kg	-	N.D.	N.D.	/	/	N.D.	N.D.
Pentabromobiphenyl	mg/kg	-	N.D.	N.D.	/	/	N.D.	N.D.
Hexabromobiphenyl	mg/kg	-	N.D.	N.D.	/	/	N.D.	N.D.
Heptabromobiphenyl	mg/kg	-	N.D.	N.D.	/	/	N.D.	N.D.
Octabromobiphenyl	mg/kg	-	N.D.	N.D.	/	/	N.D.	N.D.
Nonabromobiphenyl	mg/kg	-	N.D.	N.D.	/	/	N.D.	N.D.
Decabromobiphenyl	mg/kg	-	N.D.	N.D.	/	/	N.D.	N.D.
Sum of PBDEs	mg/kg	1000	N.D.	N.D.	/	/	N.D.	N.D.
Monobromodiphenyl ether	mg/kg	-	N.D.	N.D.	/	/	N.D.	N.D.
Dibromodiphenyl ether	mg/kg	-	N.D.	N.D.	/	/	N.D.	N.D.
Tribromodiphenyl ether	mg/kg	-	N.D.	N.D.	/	/	N.D.	N.D.
Tetrabromodiphenyl ether	mg/kg	-	N.D.	N.D.	/	/	N.D.	N.D.
Pentabromodiphenyl ether	mg/kg	-	N.D.	N.D.	/	/	N.D.	N.D.
Hexabromodiphenyl ether	mg/kg	-	N.D.	N.D.	/	/	N.D.	N.D.
Heptabromodiphenyl ether	mg/kg	-	N.D.	N.D.	/	/	N.D.	N.D.
Octabromodiphenyl ether	mg/kg	-	N.D.	N.D.	/	/	N.D.	N.D.
Nonabromodiphenyl ether	mg/kg	-	N.D.	N.D.	/	/	N.D.	N.D.
Decabromodiphenyl ether	mg/kg	-	N.D.	N.D.	/	/	N.D.	N.D.
Diisobutyl phthalate (DIBP)	mg/kg	1000	N.D.	N.D.	/	/	N.D.	N.D.
Bis-(2-ethylhexyl) Phthalate (DEHP)	mg/kg	1000	N.D.	N.D.	/	/	N.D.	N.D.
Benzylbutyl Phthalate (BBP)	mg/kg	1000	N.D.	N.D.	/	/	N.D.	N.D.
Dibutyl Phthalate (DBP)	mg/kg	1000	N.D.	N.D.	/	/	N.D.	N.D.

Sample Description:

13: LED screen

14: Glass

15: Air-cooling fin

16: Copper pipe

17: Red solid compound

18: IC

Testing Item	Unit	ROHS Limit	Result					
			19	20	21	22	23	24
Lead(Pb)	mg/kg	1000	N.D.	N.D.	N.D.	N.D.	N.D.	N.D.
Cadmium(Cd)	mg/kg	100	N.D.	N.D.	N.D.	N.D.	N.D.	N.D.
Mercury(Hg)	mg/kg	1000	N.D.	N.D.	N.D.	N.D.	N.D.	N.D.
Chromium Cr(VI) (Metal)	µg/cm ²	0.13	/	/	/	/	/	N.D.
Chromium Cr(VI) Nonmetal)	mg/kg	1000	N.D.	N.D.	N.D.	N.D.	N.D.	/
Sum of PBBs	mg/kg	1000	N.D.	N.D.	N.D.	N.D.	N.D.	/
Monobromobiphenyl	mg/kg	-	N.D.	N.D.	N.D.	N.D.	N.D.	/
Dibromobiphenyl	mg/kg	-	N.D.	N.D.	N.D.	N.D.	N.D.	/
Tribromobiphenyl	mg/kg	-	N.D.	N.D.	N.D.	N.D.	N.D.	/
Tetrabromobiphenyl	mg/kg	-	N.D.	N.D.	N.D.	N.D.	N.D.	/
Pentabromobiphenyl	mg/kg	-	N.D.	N.D.	N.D.	N.D.	N.D.	/
Hexabromobiphenyl	mg/kg	-	N.D.	N.D.	N.D.	N.D.	N.D.	/
Heptabromobiphenyl	mg/kg	-	N.D.	N.D.	N.D.	N.D.	N.D.	/
Octabromobiphenyl	mg/kg	-	N.D.	N.D.	N.D.	N.D.	N.D.	/
Nonabromobiphenyl	mg/kg	-	N.D.	N.D.	N.D.	N.D.	N.D.	/
Decabromobiphenyl	mg/kg	-	N.D.	N.D.	N.D.	N.D.	N.D.	/
Sum of PBDEs	mg/kg	1000	N.D.	N.D.	N.D.	N.D.	N.D.	/
Monobromodiphenyl ether	mg/kg	-	N.D.	N.D.	N.D.	N.D.	N.D.	/
Dibromodiphenyl ether	mg/kg	-	N.D.	N.D.	N.D.	N.D.	N.D.	/
Tribromodiphenyl ether	mg/kg	-	N.D.	N.D.	N.D.	N.D.	N.D.	/
Tetrabromodiphenyl ether	mg/kg	-	N.D.	N.D.	N.D.	N.D.	N.D.	/
Pentabromodiphenyl ether	mg/kg	-	N.D.	N.D.	N.D.	N.D.	N.D.	/
Hexabromodiphenyl ether	mg/kg	-	N.D.	N.D.	N.D.	N.D.	N.D.	/
Heptabromodiphenyl ether	mg/kg	-	N.D.	N.D.	N.D.	N.D.	N.D.	/
Octabromodiphenyl ether	mg/kg	-	N.D.	N.D.	N.D.	N.D.	N.D.	/
Nonabromodiphenyl ether	mg/kg	-	N.D.	N.D.	N.D.	N.D.	N.D.	/
Decabromodiphenyl ether	mg/kg	-	N.D.	N.D.	N.D.	N.D.	N.D.	/
Diisobutyl phthalate (DIBP)	mg/kg	1000	N.D.	N.D.	N.D.	N.D.	N.D.	/
Bis-(2-ethylhexyl) Phthalate (DEHP)	mg/kg	1000	N.D.	N.D.	N.D.	N.D.	N.D.	/
Benzylbutyl Phthalate (BBP)	mg/kg	1000	N.D.	N.D.	N.D.	N.D.	N.D.	/
Dibutyl Phthalate (DBP)	mg/kg	1000	N.D.	N.D.	N.D.	N.D.	N.D.	/

Sample Description:

19: Chip capacitor

20: Chip resistor

21: Diode

22: Dynatron

23: Capacitor

24: Solder

Testing Item	Unit	ROHS Limit	Result					
			25	26	27	28	29	30
Lead(Pb)	mg/kg	1000	N.D.	N.D.	N.D.	N.D.	N.D.	N.D.
Cadmium(Cd)	mg/kg	100	N.D.	N.D.	N.D.	N.D.	N.D.	N.D.
Mercury(Hg)	mg/kg	1000	N.D.	N.D.	N.D.	N.D.	N.D.	N.D.
Chromium Cr(VI) (Metal)	µg/cm ²	0.13	/	N.D.	/	N.D.	/	/
Chromium Cr(VI) Nonmetal)	mg/kg	1000	N.D.	/	N.D.	/	N.D.	N.D.
Sum of PBBs	mg/kg	1000	N.D.	/	N.D.	/	N.D.	N.D.
Monobromobiphenyl	mg/kg	-	N.D.	/	N.D.	/	N.D.	N.D.
Dibromobiphenyl	mg/kg	-	N.D.	/	N.D.	/	N.D.	N.D.
Tribromobiphenyl	mg/kg	-	N.D.	/	N.D.	/	N.D.	N.D.
Tetrabromobiphenyl	mg/kg	-	N.D.	/	N.D.	/	N.D.	N.D.
Pentabromobiphenyl	mg/kg	-	N.D.	/	N.D.	/	N.D.	N.D.
Hexabromobiphenyl	mg/kg	-	N.D.	/	N.D.	/	N.D.	N.D.
Heptabromobiphenyl	mg/kg	-	N.D.	/	N.D.	/	N.D.	N.D.
Octabromobiphenyl	mg/kg	-	N.D.	/	N.D.	/	N.D.	N.D.
Nonabromobiphenyl	mg/kg	-	N.D.	/	N.D.	/	N.D.	N.D.
Decabromobiphenyl	mg/kg	-	N.D.	/	N.D.	/	N.D.	N.D.
Sum of PBDEs	mg/kg	1000	N.D.	/	N.D.	/	N.D.	N.D.
Monobromodiphenyl ether	mg/kg	-	N.D.	/	N.D.	/	N.D.	N.D.
Dibromodiphenyl ether	mg/kg	-	N.D.	/	N.D.	/	N.D.	N.D.
Tribromodiphenyl ether	mg/kg	-	N.D.	/	N.D.	/	N.D.	N.D.
Tetrabromodiphenyl ether	mg/kg	-	N.D.	/	N.D.	/	N.D.	N.D.
Pentabromodiphenyl ether	mg/kg	-	N.D.	/	N.D.	/	N.D.	N.D.
Hexabromodiphenyl ether	mg/kg	-	N.D.	/	N.D.	/	N.D.	N.D.
Heptabromodiphenyl ether	mg/kg	-	N.D.	/	N.D.	/	N.D.	N.D.
Octabromodiphenyl ether	mg/kg	-	N.D.	/	N.D.	/	N.D.	N.D.
Nonabromodiphenyl ether	mg/kg	-	N.D.	/	N.D.	/	N.D.	N.D.
Decabromodiphenyl ether	mg/kg	-	N.D.	/	N.D.	/	N.D.	N.D.
Diisobutyl phthalate (DIBP)	mg/kg	1000	N.D.	/	N.D.	/	N.D.	N.D.
Bis-(2-ethylhexyl) Phthalate (DEHP)	mg/kg	1000	N.D.	/	N.D.	/	N.D.	N.D.
Benzylbutyl Phthalate (BBP)	mg/kg	1000	N.D.	/	N.D.	/	N.D.	N.D.
Dibutyl Phthalate (DBP)	mg/kg	1000	N.D.	/	N.D.	/	N.D.	N.D.

Sample Description:

25: Transformer bobbin

26: Transformer winding

27: Inductor bobbin

28: Inductor winding

29: Prism

30: Line row group

Testing Item	Unit	ROHS Limit	Result					
			31	32	33	34	35	36
Lead(Pb)	mg/kg	1000	N.D.	N.D.	N.D.	N.D.	N.D.	N.D.
Cadmium(Cd)	mg/kg	100	N.D.	N.D.	N.D.	N.D.	N.D.	N.D.
Mercury(Hg)	mg/kg	1000	N.D.	N.D.	N.D.	N.D.	N.D.	N.D.
Chromium Cr(VI) (Metal)	µg/cm ²	0.13	/	/	/	/	/	/
Chromium Cr(VI) Nonmetal)	mg/kg	1000	N.D.	N.D.	N.D.	N.D.	N.D.	N.D.
Sum of PBBs	mg/kg	1000	N.D.	N.D.	N.D.	N.D.	N.D.	N.D.
Monobromobiphenyl	mg/kg	-	N.D.	N.D.	N.D.	N.D.	N.D.	N.D.
Dibromobiphenyl	mg/kg	-	N.D.	N.D.	N.D.	N.D.	N.D.	N.D.
Tribromobiphenyl	mg/kg	-	N.D.	N.D.	N.D.	N.D.	N.D.	N.D.
Tetrabromobiphenyl	mg/kg	-	N.D.	N.D.	N.D.	N.D.	N.D.	N.D.
Pentabromobiphenyl	mg/kg	-	N.D.	N.D.	N.D.	N.D.	N.D.	N.D.
Hexabromobiphenyl	mg/kg	-	N.D.	N.D.	N.D.	N.D.	N.D.	N.D.
Heptabromobiphenyl	mg/kg	-	N.D.	N.D.	N.D.	N.D.	N.D.	N.D.
Octabromobiphenyl	mg/kg	-	N.D.	N.D.	N.D.	N.D.	N.D.	N.D.
Nonabromobiphenyl	mg/kg	-	N.D.	N.D.	N.D.	N.D.	N.D.	N.D.
Decabromobiphenyl	mg/kg	-	N.D.	N.D.	N.D.	N.D.	N.D.	N.D.
Sum of PBDEs	mg/kg	1000	N.D.	N.D.	N.D.	N.D.	N.D.	N.D.
Monobromodiphenyl ether	mg/kg	-	N.D.	N.D.	N.D.	N.D.	N.D.	N.D.
Dibromodiphenyl ether	mg/kg	-	N.D.	N.D.	N.D.	N.D.	N.D.	N.D.
Tribromodiphenyl ether	mg/kg	-	N.D.	N.D.	N.D.	N.D.	N.D.	N.D.
Tetrabromodiphenyl ether	mg/kg	-	N.D.	N.D.	N.D.	N.D.	N.D.	N.D.
Pentabromodiphenyl ether	mg/kg	-	N.D.	N.D.	N.D.	N.D.	N.D.	N.D.
Hexabromodiphenyl ether	mg/kg	-	N.D.	N.D.	N.D.	N.D.	N.D.	N.D.
Heptabromodiphenyl ether	mg/kg	-	N.D.	N.D.	N.D.	N.D.	N.D.	N.D.
Octabromodiphenyl ether	mg/kg	-	N.D.	N.D.	N.D.	N.D.	N.D.	N.D.
Nonabromodiphenyl ether	mg/kg	-	N.D.	N.D.	N.D.	N.D.	N.D.	N.D.
Decabromodiphenyl ether	mg/kg	-	N.D.	N.D.	N.D.	N.D.	N.D.	N.D.
Diisobutyl phthalate (DIBP)	mg/kg	1000	N.D.	N.D.	N.D.	N.D.	N.D.	N.D.
Bis-(2-ethylhexyl) Phthalate (DEHP)	mg/kg	1000	N.D.	N.D.	N.D.	N.D.	N.D.	N.D.
Benzylbutyl Phthalate (BBP)	mg/kg	1000	N.D.	N.D.	N.D.	N.D.	N.D.	N.D.
Dibutyl Phthalate (DBP)	mg/kg	1000	N.D.	N.D.	N.D.	N.D.	N.D.	N.D.

Sample Description:

31: Y-capacitor

32: Heat-shrinkable tubing

33: X-capacitor

34: Patch inductance

35: Rectifier bridge

36: Fuse

Testing Item	Unit	ROHS Limit	Result					
			37	38	39	40	41	42
Lead(Pb)	mg/kg	1000	N.D.	N.D.	N.D.	N.D.	N.D.	N.D.
Cadmium(Cd)	mg/kg	100	N.D.	N.D.	N.D.	N.D.	N.D.	N.D.
Mercury(Hg)	mg/kg	1000	N.D.	N.D.	N.D.	N.D.	N.D.	N.D.
Chromium Cr(VI) (Metal)	µg/cm ²	0.13	/	/	/	/	/	N.D.
Chromium Cr(VI) Nonmetal)	mg/kg	1000	N.D.	N.D.	N.D.	N.D.	N.D.	/
Sum of PBBs	mg/kg	1000	N.D.	N.D.	N.D.	N.D.	N.D.	/
Monobromobiphenyl	mg/kg	-	N.D.	N.D.	N.D.	N.D.	N.D.	/
Dibromobiphenyl	mg/kg	-	N.D.	N.D.	N.D.	N.D.	N.D.	/
Tribromobiphenyl	mg/kg	-	N.D.	N.D.	N.D.	N.D.	N.D.	/
Tetrabromobiphenyl	mg/kg	-	N.D.	N.D.	N.D.	N.D.	N.D.	/
Pentabromobiphenyl	mg/kg	-	N.D.	N.D.	N.D.	N.D.	N.D.	/
Hexabromobiphenyl	mg/kg	-	N.D.	N.D.	N.D.	N.D.	N.D.	/
Heptabromobiphenyl	mg/kg	-	N.D.	N.D.	N.D.	N.D.	N.D.	/
Octabromobiphenyl	mg/kg	-	N.D.	N.D.	N.D.	N.D.	N.D.	/
Nonabromobiphenyl	mg/kg	-	N.D.	N.D.	N.D.	N.D.	N.D.	/
Decabromobiphenyl	mg/kg	-	N.D.	N.D.	N.D.	N.D.	N.D.	/
Sum of PBDEs	mg/kg	1000	N.D.	N.D.	N.D.	N.D.	N.D.	/
Monobromodiphenyl ether	mg/kg	-	N.D.	N.D.	N.D.	N.D.	N.D.	/
Dibromodiphenyl ether	mg/kg	-	N.D.	N.D.	N.D.	N.D.	N.D.	/
Tribromodiphenyl ether	mg/kg	-	N.D.	N.D.	N.D.	N.D.	N.D.	/
Tetrabromodiphenyl ether	mg/kg	-	N.D.	N.D.	N.D.	N.D.	N.D.	/
Pentabromodiphenyl ether	mg/kg	-	N.D.	N.D.	N.D.	N.D.	N.D.	/
Hexabromodiphenyl ether	mg/kg	-	N.D.	N.D.	N.D.	N.D.	N.D.	/
Heptabromodiphenyl ether	mg/kg	-	N.D.	N.D.	N.D.	N.D.	N.D.	/
Octabromodiphenyl ether	mg/kg	-	N.D.	N.D.	N.D.	N.D.	N.D.	/
Nonabromodiphenyl ether	mg/kg	-	N.D.	N.D.	N.D.	N.D.	N.D.	/
Decabromodiphenyl ether	mg/kg	-	N.D.	N.D.	N.D.	N.D.	N.D.	/
Diisobutyl phthalate (DIBP)	mg/kg	1000	N.D.	N.D.	N.D.	N.D.	N.D.	/
Bis-(2-ethylhexyl) Phthalate (DEHP)	mg/kg	1000	N.D.	N.D.	N.D.	N.D.	N.D.	/
Benzylbutyl Phthalate (BBP)	mg/kg	1000	N.D.	N.D.	N.D.	N.D.	N.D.	/
Dibutyl Phthalate (DBP)	mg/kg	1000	N.D.	N.D.	N.D.	N.D.	N.D.	/

Sample Description:

37: White plastic

38: Screen

39: Fan

40: Solid-state insulating compounds

41: The brown wire

42: Motor

Notes:

1mg/kg=1ppm = 0.0001%

N.D. = Not Detected (<MDL)

MDL = Method Detection Limit

/=Not Regulated

Sample Photo:

Photo 1



Photo 2



Photo 3



Photo 4



Photo 5

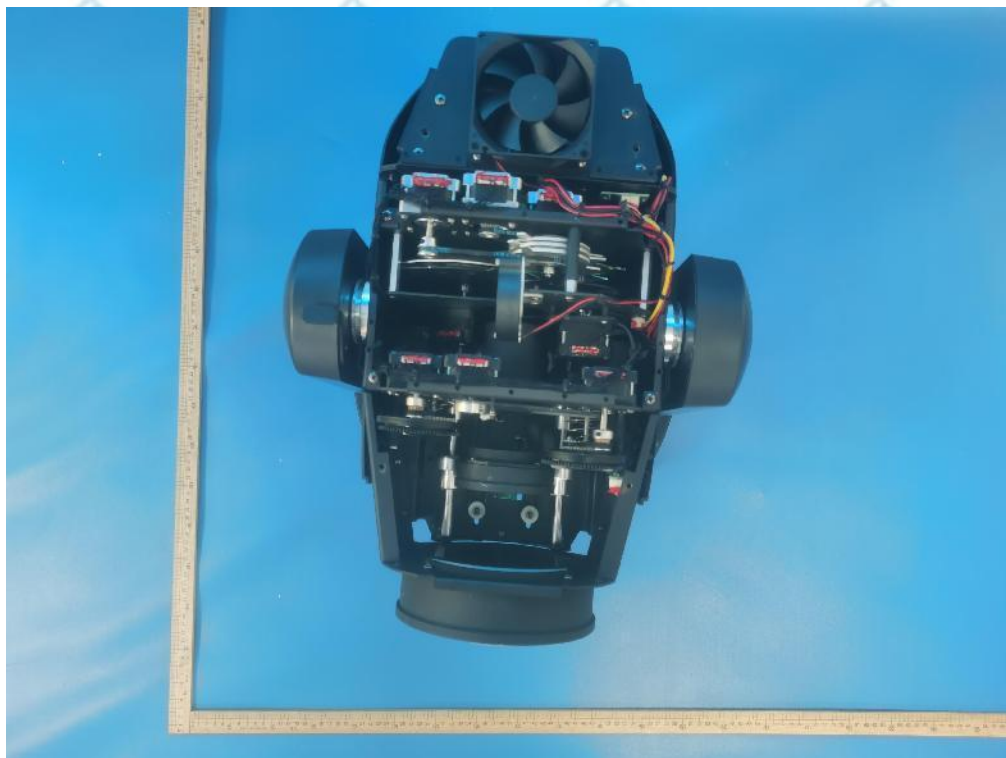


Photo 6

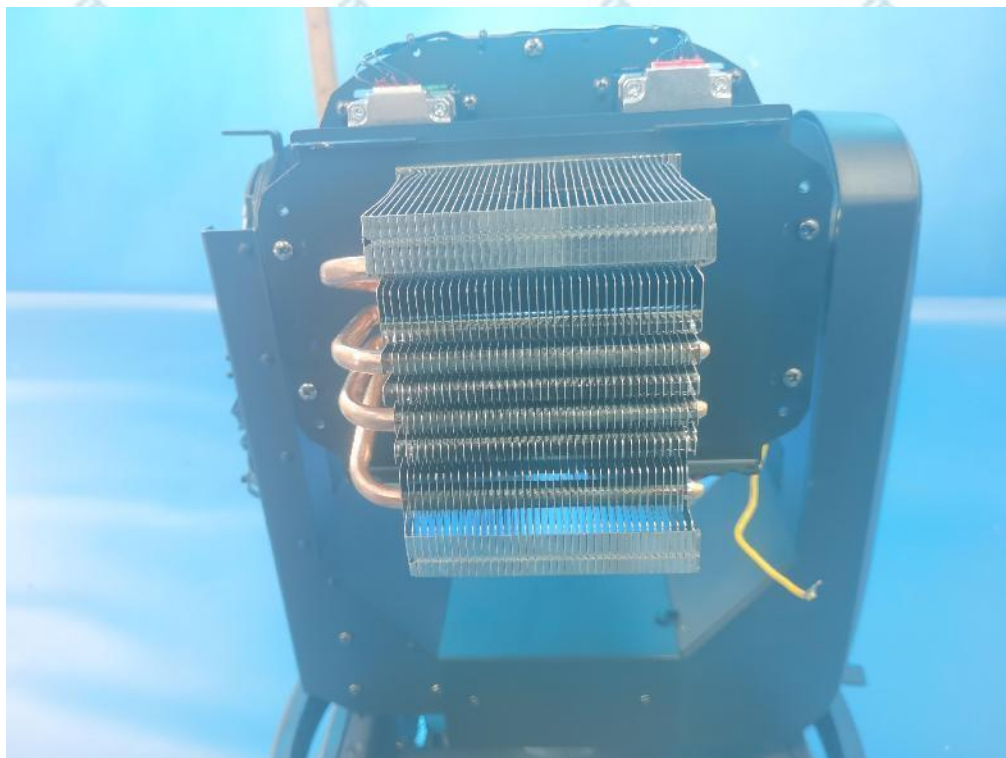


Photo 7

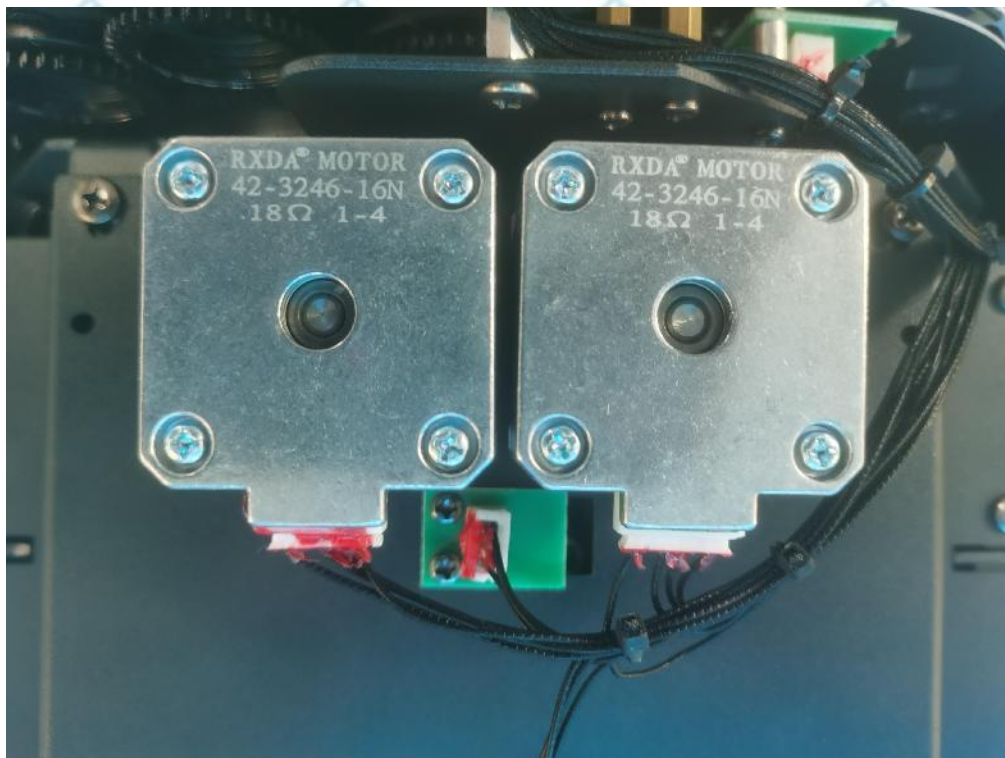


Photo 8

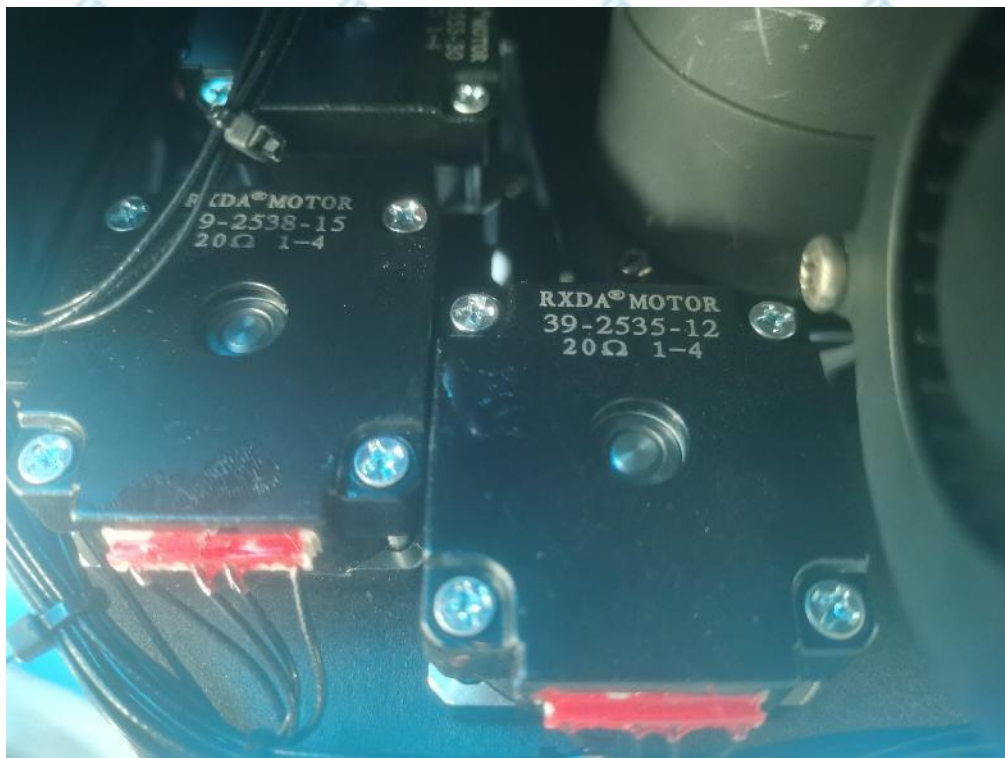


Photo 9

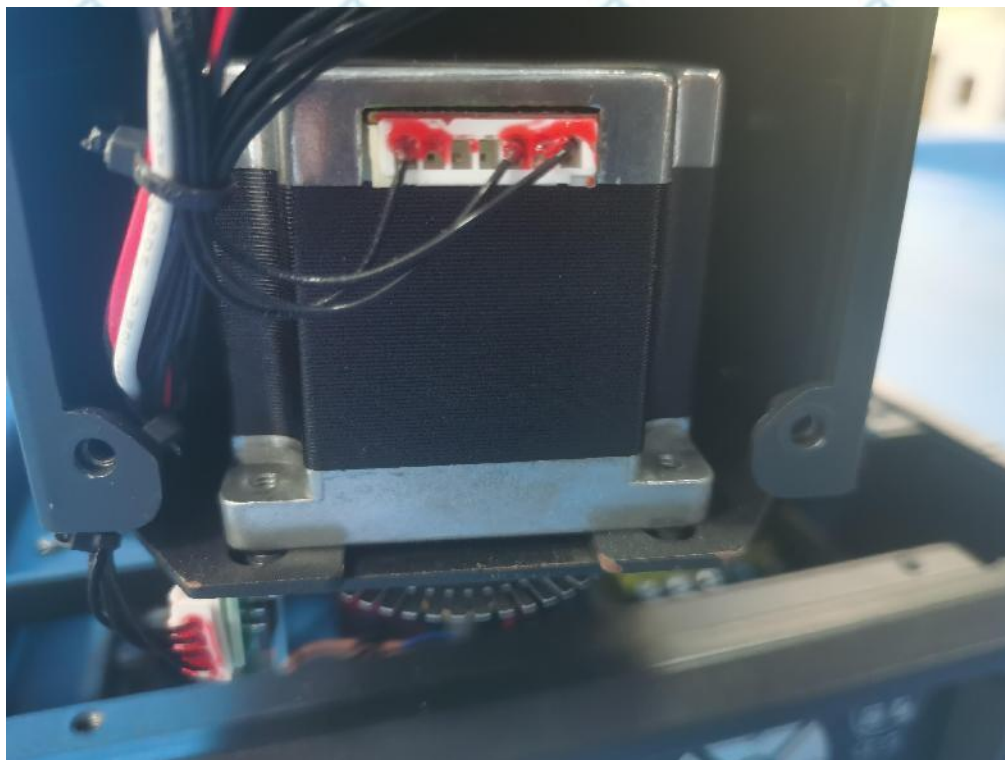


Photo 10

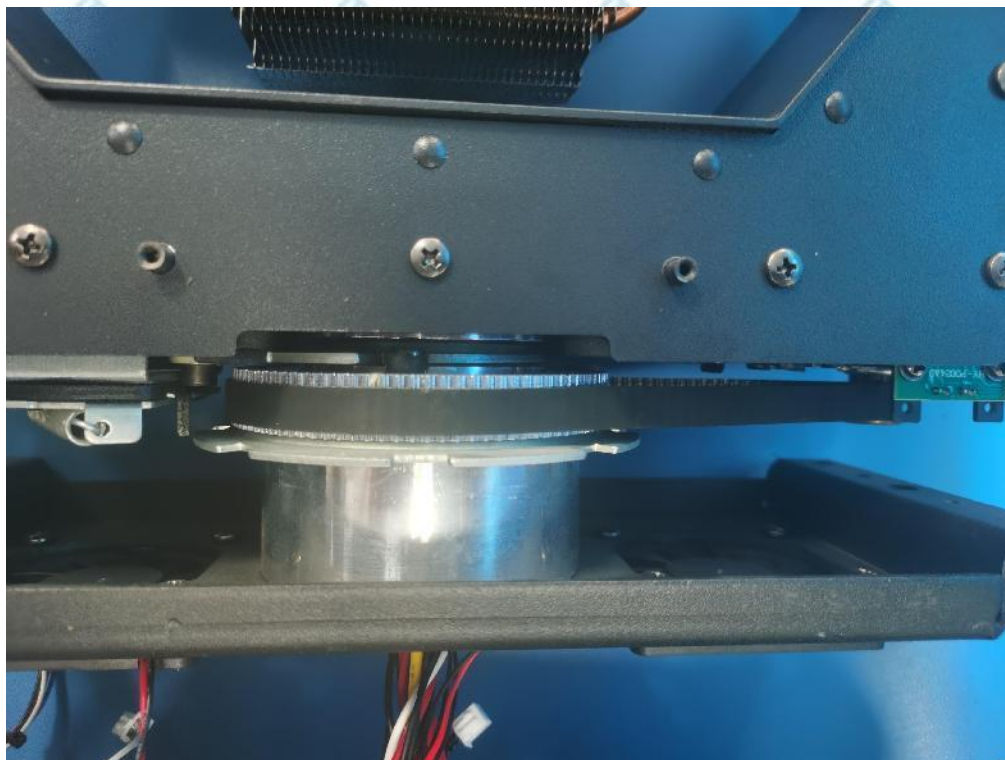


Photo 11



Photo 12

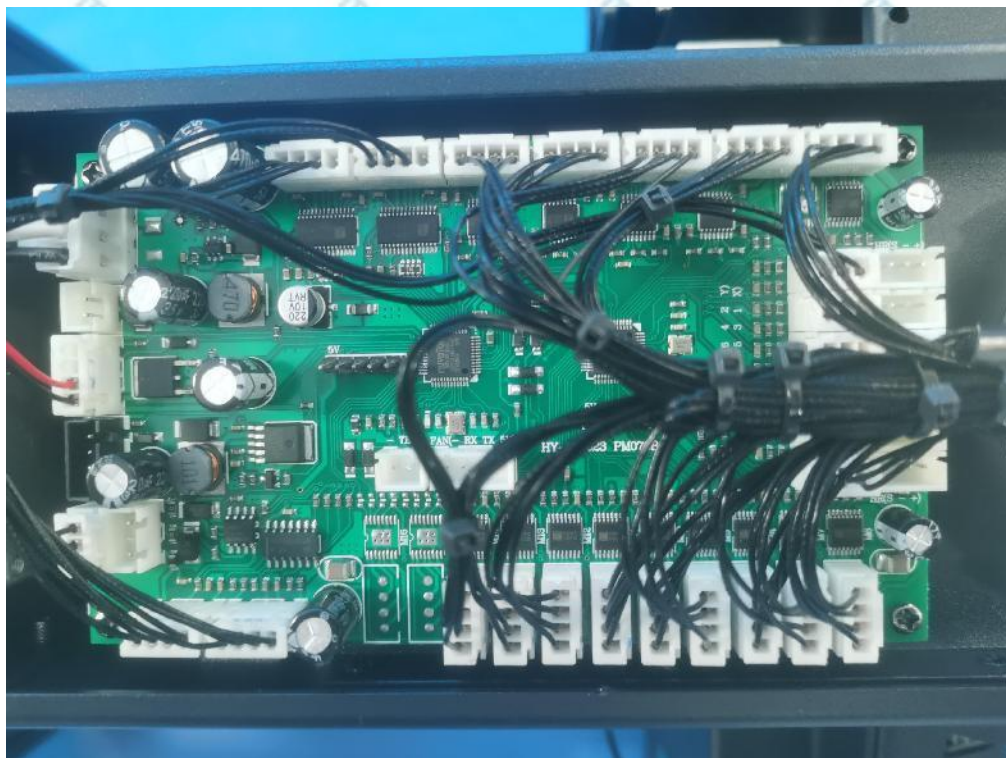


Photo 13

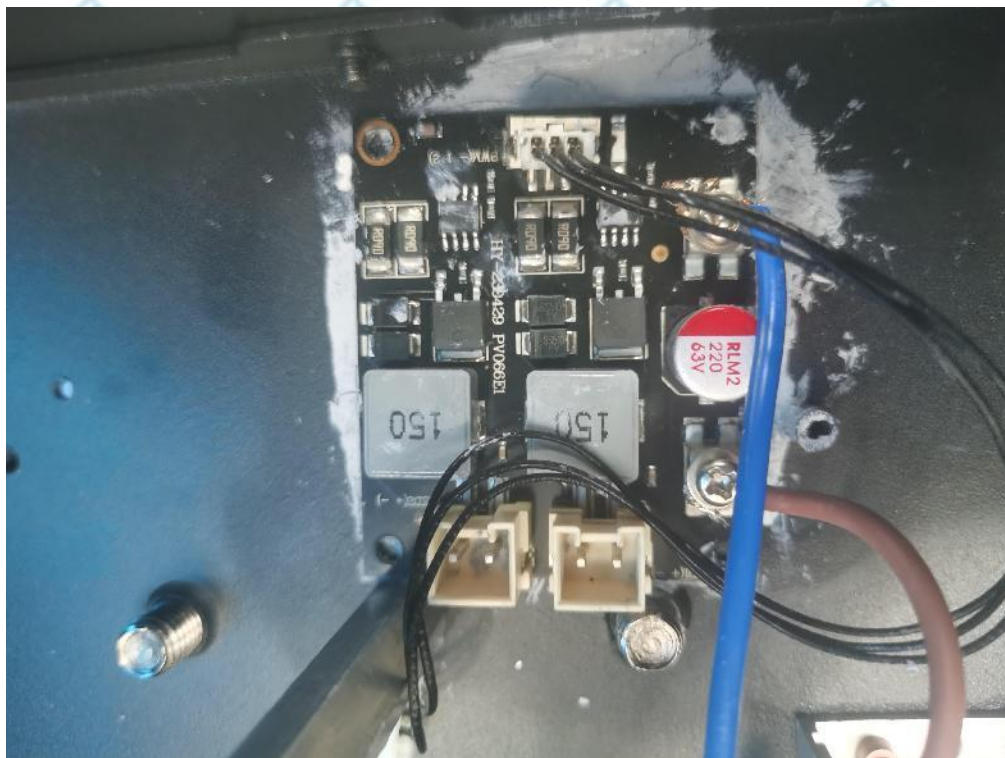


Photo 14

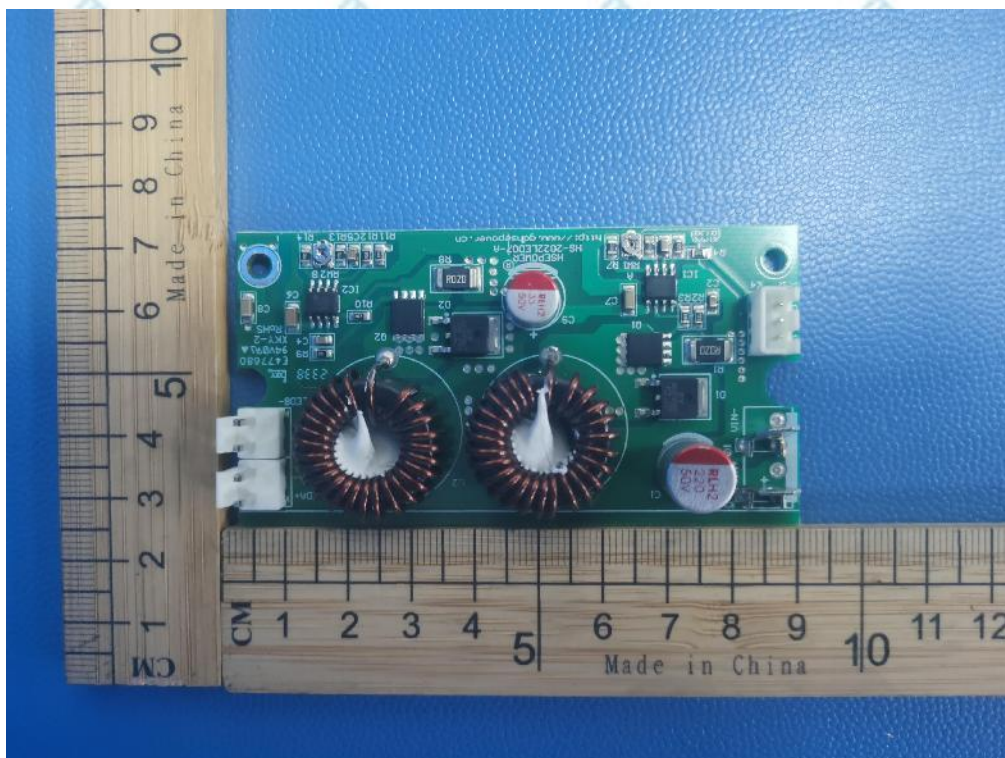


Photo 15

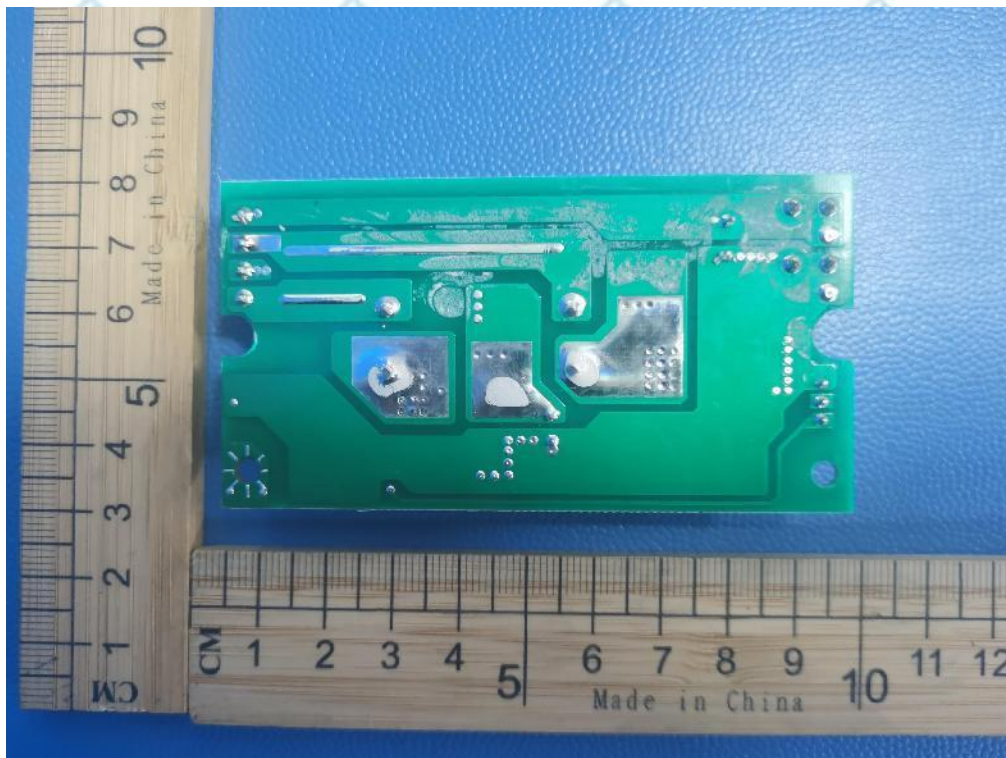


Photo 16

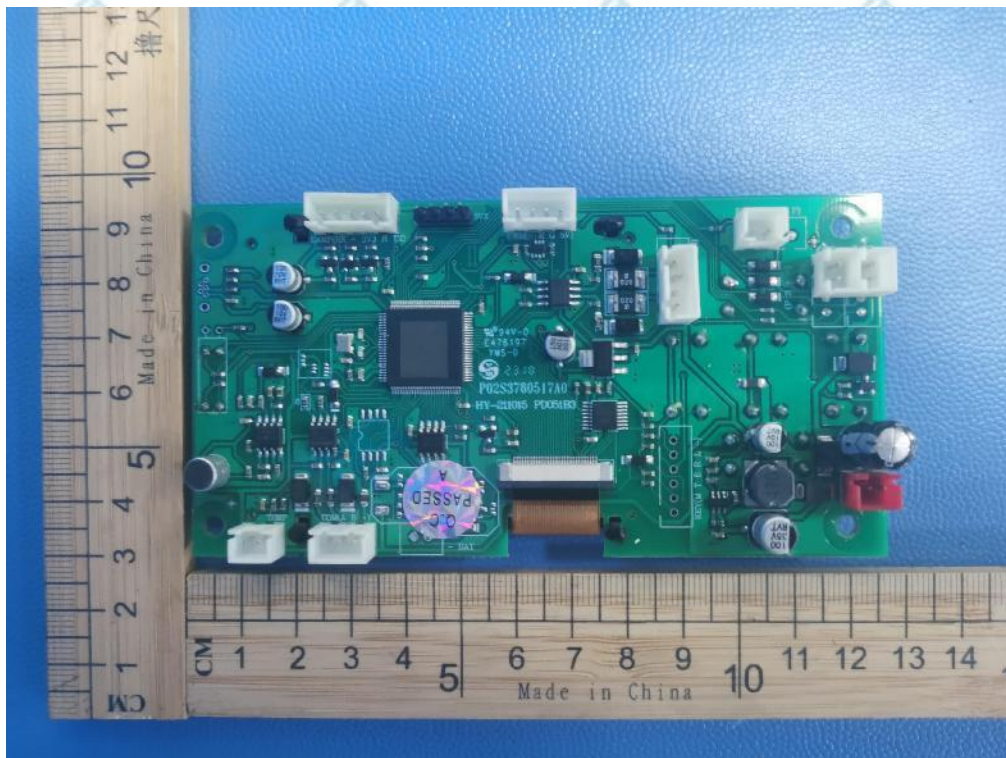


Photo 17

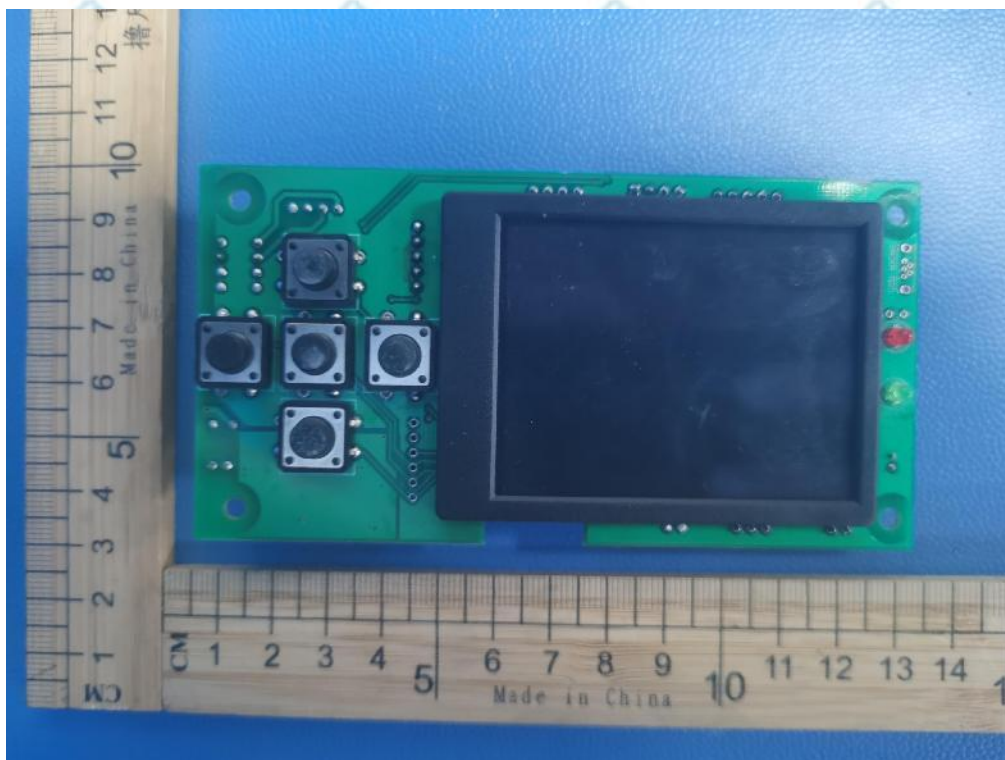


Photo 18

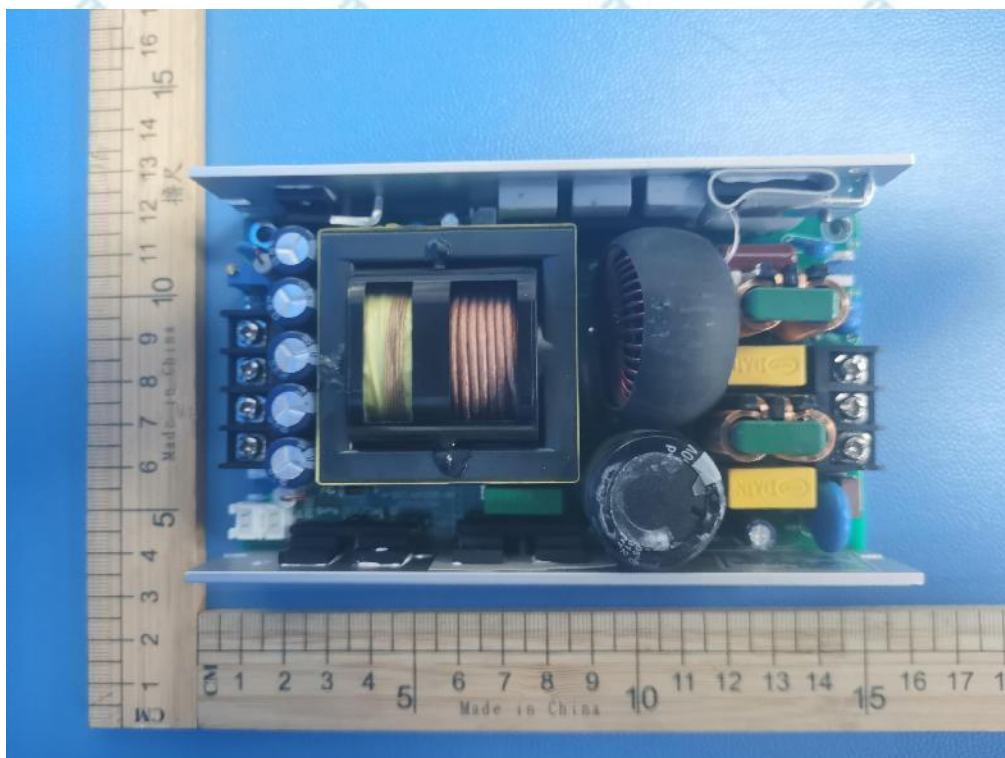


Photo 19

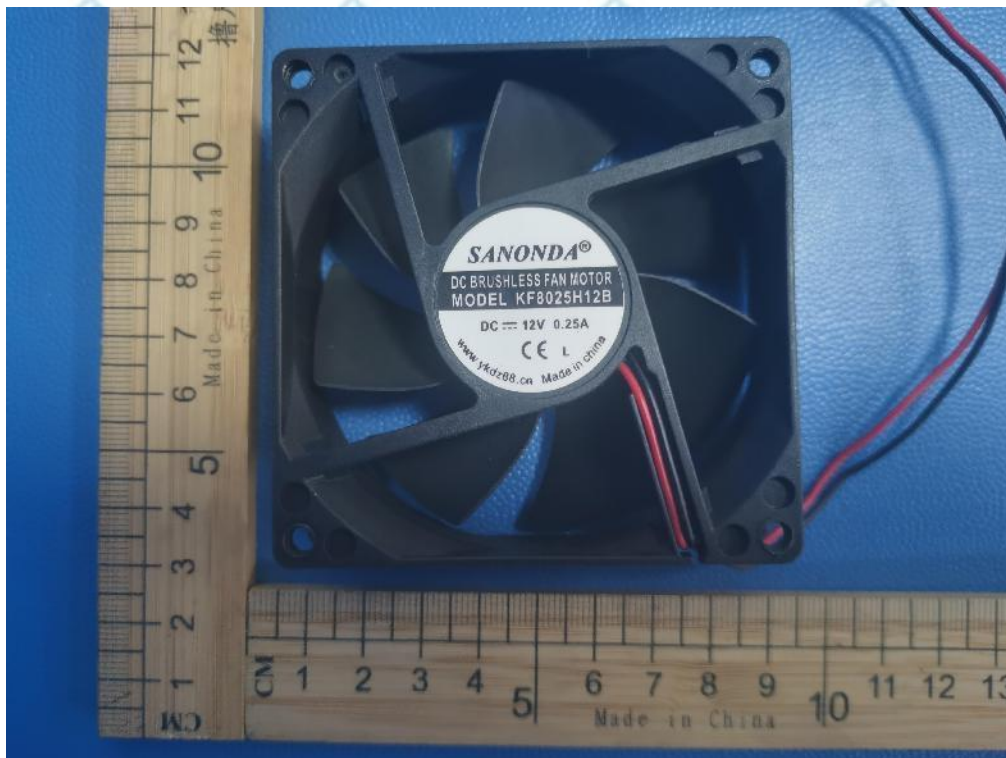
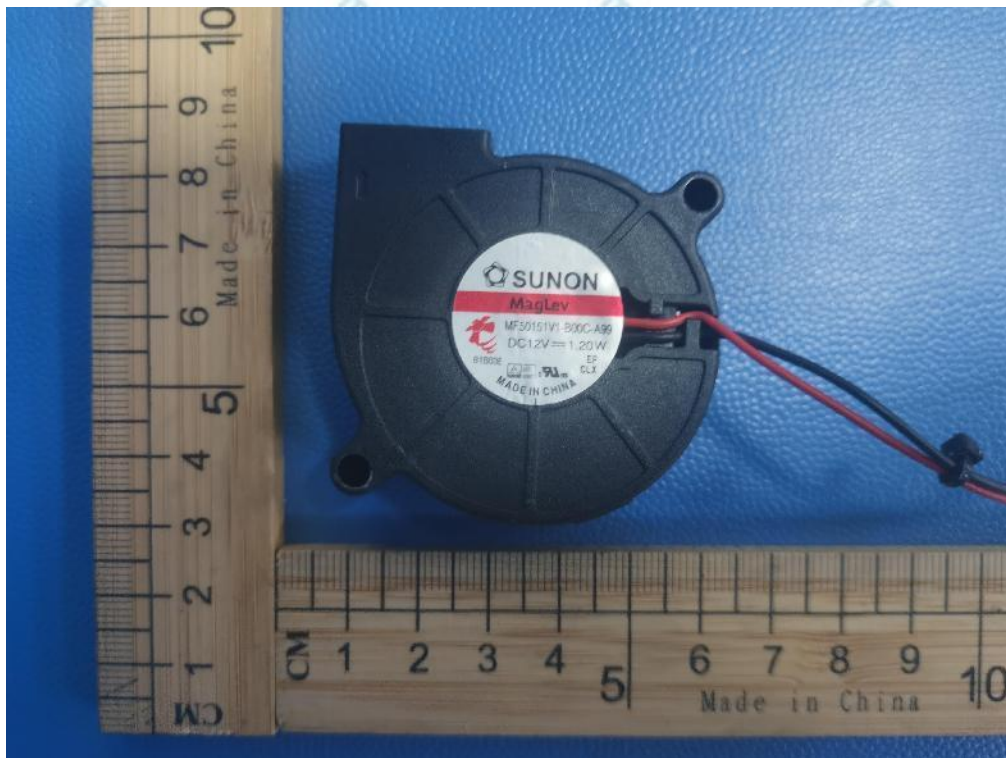


Photo 20



---The end of report---